

LA FURSTEMBERG

J.-R. CAVAILLER

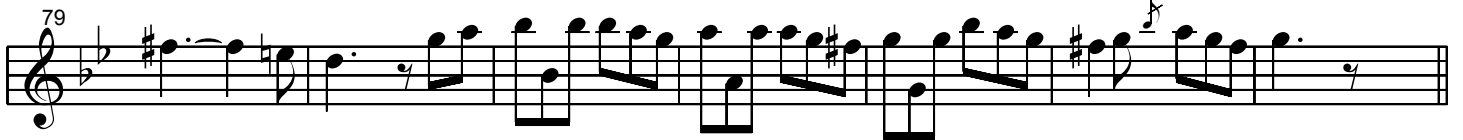
Thème

Musical score for the 'Thème' section, consisting of six staves of music in G minor (one flat) and 3/4 time. The notation includes various note values such as quarter, eighth, and sixteenth notes, along with rests and accidentals. Measure numbers 1, 6, 11, 16, 21, and 26 are indicated at the beginning of their respective staves.

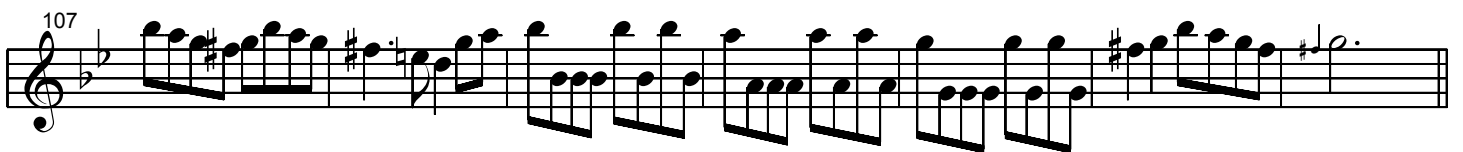
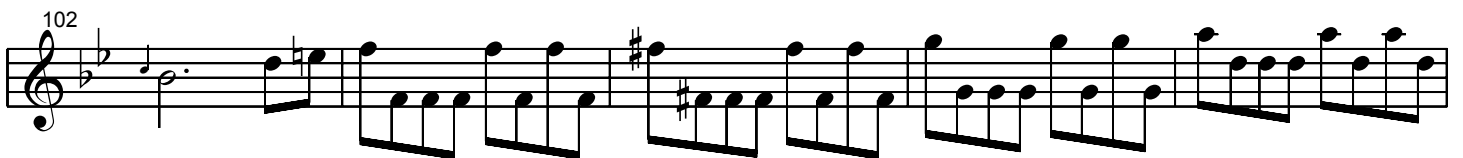
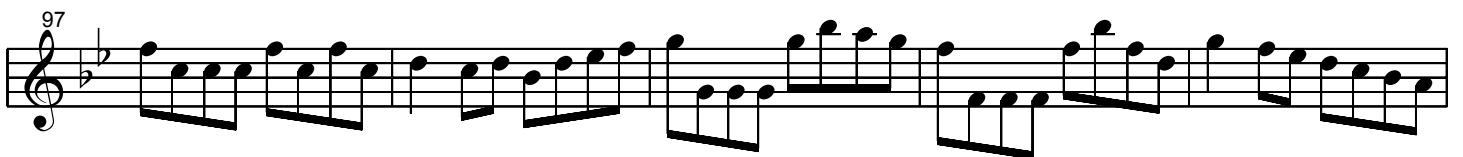
Variation 1

Musical score for 'Variation 1', consisting of five staves of music in G minor (one flat) and 3/4 time. The variation features a more rhythmic and melodic line with frequent sixteenth-note patterns. Measure numbers 29, 35, 40, 45, and 51 are indicated at the beginning of their respective staves.

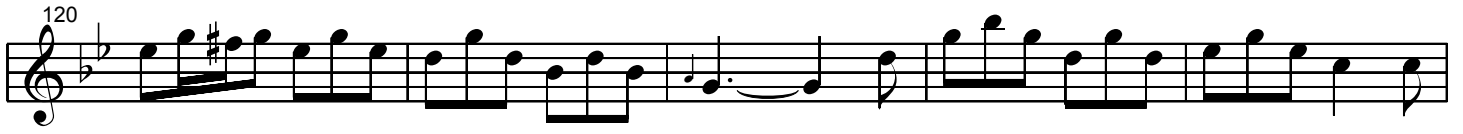
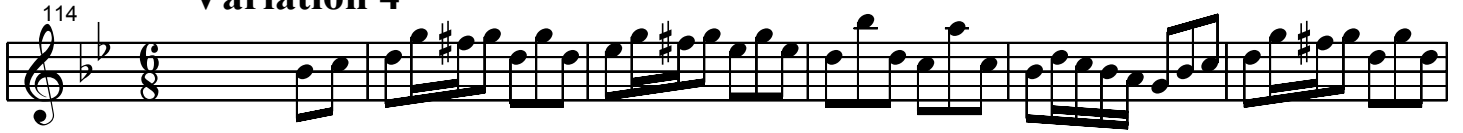
Variation 2



Variation 3



Variation 4



Variation 5



Variation 6

Musical score for Variation 6, measures 170-194. The score is written in treble clef with a key signature of one flat (B-flat). The music consists of a single melodic line with a complex, rhythmic pattern. The notation includes various note values, rests, and accidentals (sharps and naturals). The score is divided into measures, with measure numbers 170, 173, 176, 179, 182, 185, 188, 191, and 194 indicated at the beginning of each line. The music features a mix of eighth and sixteenth notes, often beamed together, and includes some chromatic movement and trills.